

FY-LC-1 Lifting column with pressure Switch for Church Pulpit

Item number: **FY-LC-1**

Similar to: SKF **TXG telescopic pillar**

Main Function: Prevent the pinch & Overload Protection

(ORMON limit pressure switches)

When lifting up, automaticly stop if someone jump onto the pulpit;

When descending, automaticly stop if someone put hands at bottom of pulpit.

Force push: 1500N (or as per your request)

Speed at no load: 13mm/s

System of protection: IP30

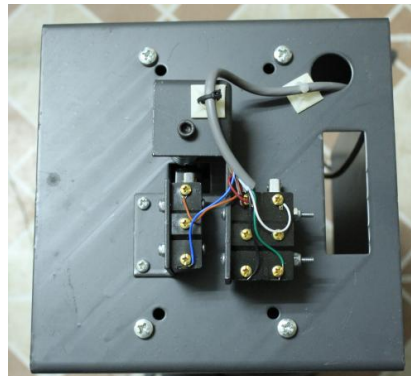
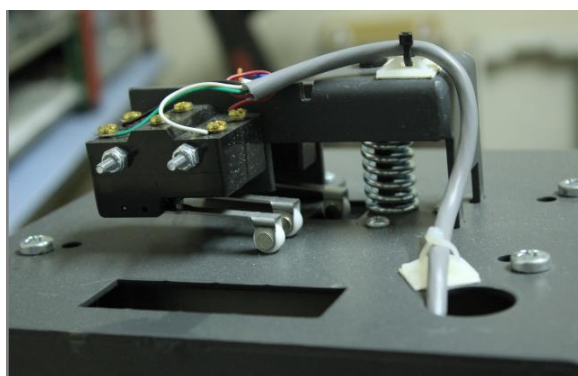
Working Voltage: 12VDC or 24VDC

Complete:including 1 lifting column + 2 Ormon pressure switches + Metalcover +

1 handset controller + 1 power control box

MOQ 100sets per order

Photos:



FY series linear actuator used in electric nursing bed ,operation beds,traction beds,message chairs,dental chairs.

FY-M-1



FY-M-4



Specifiction of FY-M-1 linear actuator

Input voltage :12V DC/ 24VDC

Maximum load capacity:6000N(optional 3000N,1000N)

Maximum speed :30mm/s

Stroke :30-1000mm

Min installation Dimension:Stroke+175mm

Limited switches :built in

Operation temperature :-26-65°C

Protection class:IP45

Type of duty: S2-10min

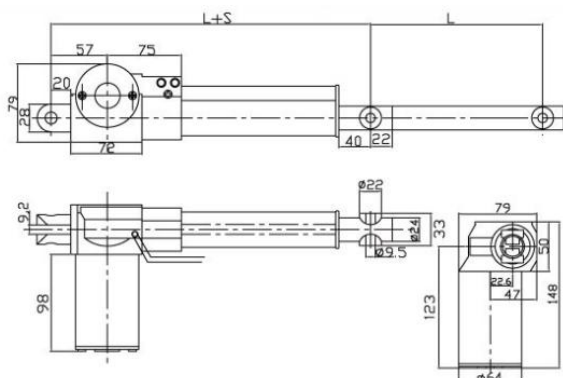
Covering color :black and silvery white

Noise level: 53db

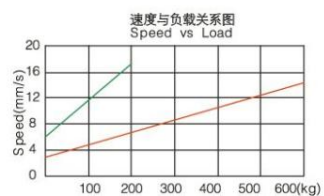
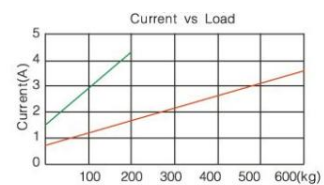
The difference between FY-M-1and FY-M-4 is the hhead, FY-M-4 is with "U" head.

CE, ROHS certificated

Dimension



linear garph



FY-M-2 for solar track system



Specification of FY-M-2 linear actuator

Input voltage :12V DC/24V DC

Maximum load capacity:4000N, or **6000N IP65 solar track linear actuator**

Max. Speed: 36 mm/s

Stroke :30-1000mm

Min installation Dimension:Stroke+175mm

Limited switches :built in

Operation temperature :-26-65°C

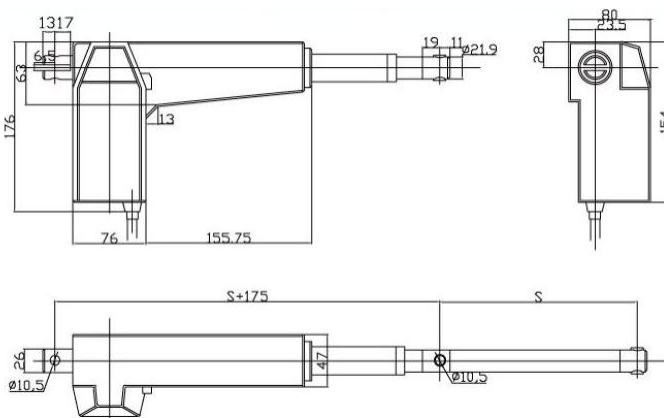
Protection class:IP54 (up to IP65 waterproof linear actuator)

Type of duty: S2-10min

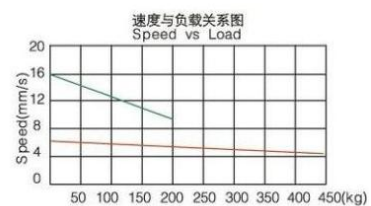
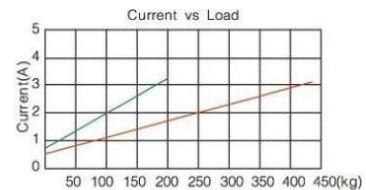
Noise level:45db

CE, ROHS certificated

Dimension



linear graph



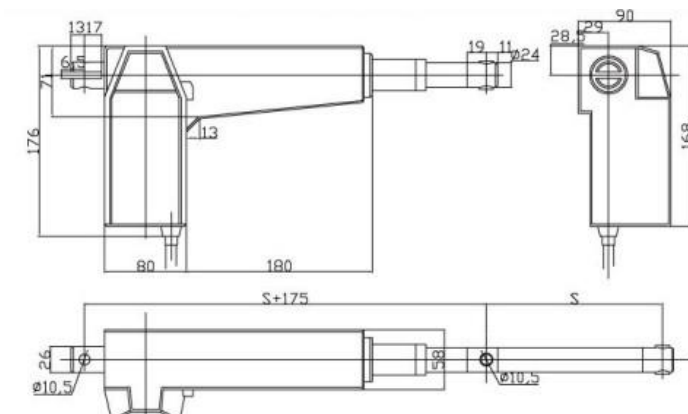
FY-M-3 high loading capacity



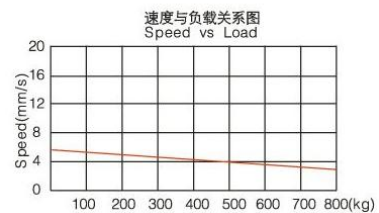
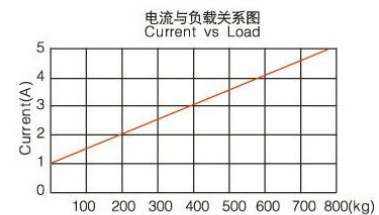
Specification of FY-M-3 Linear actuator

Input voltage :12V DC/24V DC
Maximum load capacity:8000N
Max. Speed: 36mm/s
Stroke : 30-1000mm
Min installation Dimension:Stroke+175mm
Limited switches :built in
Operation temperature :-26-65°C
Protection class:IP54
Type of duty S2-10min
Noise level: 45db
CE, ROHS certificated

Dimension



linear graph



FY-M-5 Slider linear actuator



Specifiction of FY-M-5 Linear actuator

(usually used in combination sofa, and TV stand.)

Input voltage :12V DC/24V DC

Maximum load capacity:6000N

(Generally 3000N, when 3000N, Loading Speed:15mm/s, no loading speed: 18mm/s)

Stroke : 30-1000mm (best selling strok is 330mm)

Limited switches :built in

Operation temperature :-26-65°C

Protection class:IP54

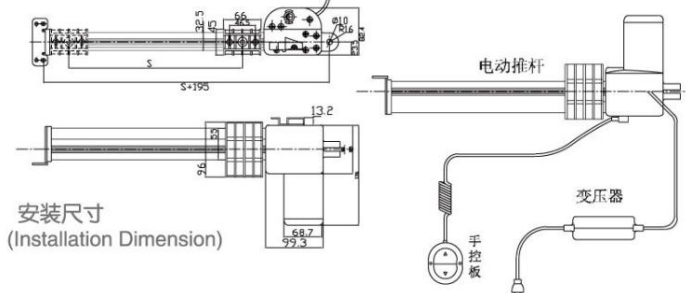
Type of duty:s2-10min

Covering color :black

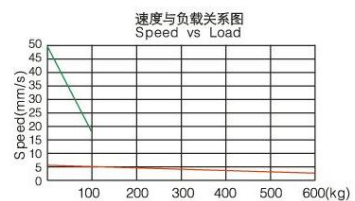
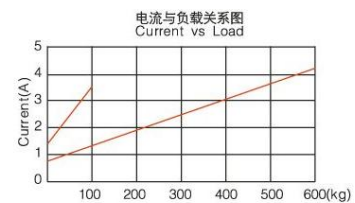
Power :60w

CE, ROHS certificated

Dimension



Linear Graph



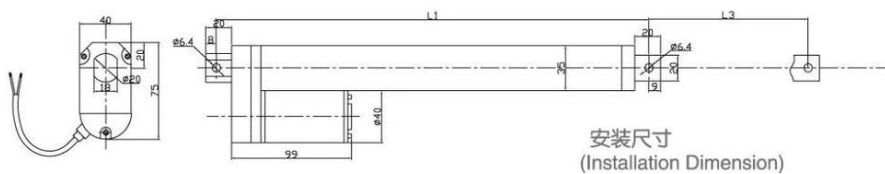
FY-M-6 Mini linear actuator



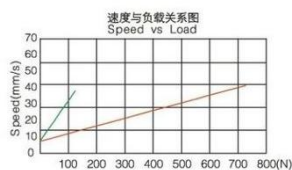
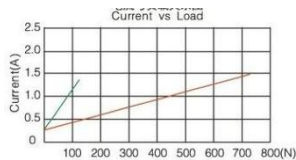
Specification of FY-M-6 Linear actuator

Input voltage :12V DC/24V DC/36VDC/48VDC
 Maximum load capacity:2000N(Generally 750N)
 Speed:11-36mm/s
 Stroke :30-1000mm
 Min installation Dimension:Stroke+105mm
 Limited switches :built in
 Operation temperature :-26-65°C
 Protection class:IP54 or IP65
 Type of duty:s2-10min
 Covering color :silvery white
 Noise level:53db
 Installation hole Dimension :5.5mm/6.3mm/8mm
 CE, ROHS certificated

Dimension



Linear Graph



FY-M-8 Lifting column

Application: furniture, ,electric desk, table, Motorized Positioning Systems, electric stage, Electric Massage Chair , dental chair.



Specifiction of FY-M-8 lifting column

Input voltage :12V DC/24V DC

Maximum load capacity: 6000N

(General 4000N, when 4000N, Load speed :5mm/s, No load speed :6mm/s)

Stroke :100-600mm

Min installation Dimension:Stroke+150mm

Limited switches :built in

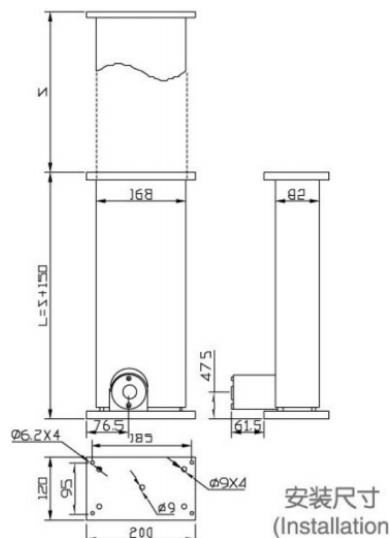
Operation temperature :-26-65°C

Protection class:IP43

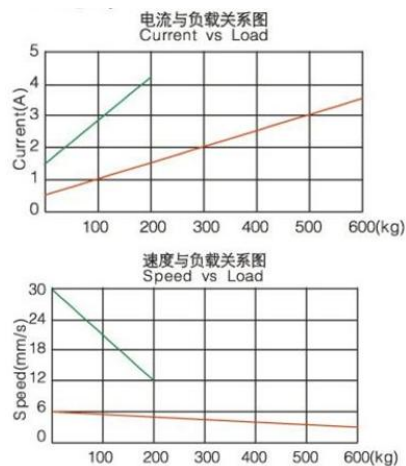
Type of duty:s2-10min

CE, ROHS certificated

Dimension



Linear Graph



Power Control Box

FY-C-1: can load 1,2,3,4 linear actuators, build-in back –up battery, keep operation Dependability even when the power off.



Specifications:

Input voltage :110/220VAC

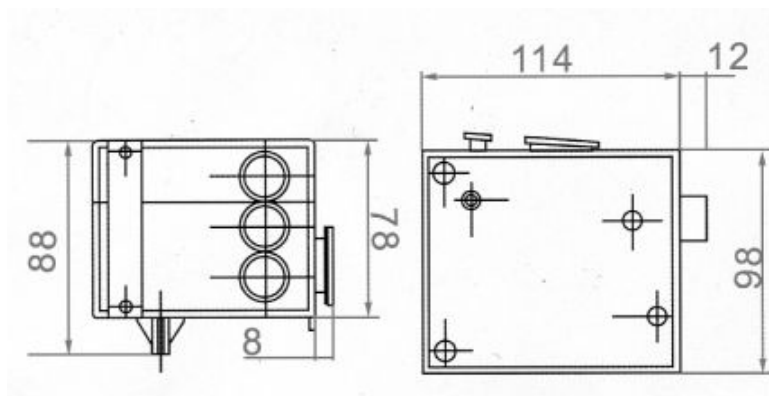
Output voltage :12/24VDC

Type of duty: S2-10min

Colour:black ,white

Inner set :Overload protection

Dimension



FY-C-2 can control up to 5 linear actuator .

FY-C-2 is an economical controller ensures space-saving ,multipurpose and connect 1-5 linear actuator ,one handset or foot switch,build-in back-up battery,keep operation dependability even when the power off .



Specifications:

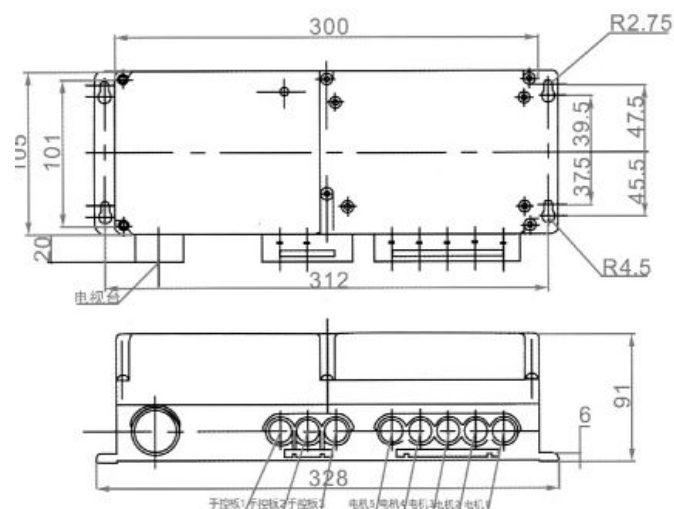
Input voltage :110/220VAC

Output voltage :12/24VDC

Type of duty:s2-10min

Colour:black ,white

Dimension



FY-C-4: can control 1-2linear actuator ,with over load protection device .



Specifications:

Input voltage :110/220VAC

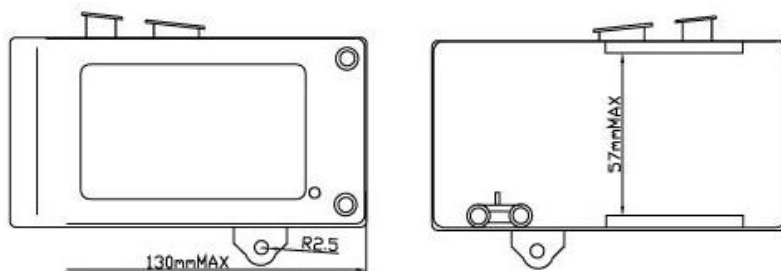
Output voltage :12/29VDC

Type of duty:s2-10min

Colour:black

Inner set:overload protection

Dimension:



Handset controller

FY-H-1



FY-H-2



FY-H-3



FY-H-4



FY-H-6



FY-H-1/2/3/4/6 series handset can operate 1 linear actuator.
All kinds of controllers are available upon customer's request.
FY-H-6: with ellipse design, it is good used at handrail of sofa.

FY-H-5: can operate 2 linear actuator



FY-H-7



FY-H-8



FY-H-9



FY-H-10



FY-H-7/8/9 can control up to 4 linear actuators;
FY-H-10 is with 5 rows, can control 4 linear actuators and additional combination
2 units of 4 synchronized.

FY-H-13: foot controller, 4 sets of FY-H-13 could be abreast to control 4 units.



Radio wireless controll sets as below:



Some photos for your reference:



Contact our factory:

China Faryuan Electric Factory

Contact: Alex (CEO) (sales@ele-b2b.com, alexify@gmail.com)

sales: Cherry (sales2@ele-b2b.com), Baylor (sales3@ele-b2b.com)

Tel: +86-13505740443